

# Telit USB Driver Installer User Guide

1VV0301164 Rev.4 – 2016-01-18



## **APPLICABILITY TABLE**

<b>PRODUCT</b>
<b>ATOP 3.5G</b>
<b>CE910 Series</b>
<b>DE910 Series</b>
<b>GE910 Series</b>
<b>HE910 Series</b>
<b>HE920 Series</b>
<b>LE866 Series</b>
<b>LE910 Series</b>
<b>LE910 V2 Series</b>
<b>LE920 Series</b>
<b>UE910 Series</b>
<b>UL865</b>

### **SW Version**

**1.03.0009**

**UF.00.04**



*SPECIFICATIONS SUBJECT TO CHANGE WITHOUT NOTICE***Notice**

While reasonable efforts have been made to assure the accuracy of this document, Telit assumes no liability resulting from any inaccuracies or omissions in this document, or from use of the information obtained herein. The information in this document has been carefully checked and is believed to be entirely reliable. However, no responsibility is assumed for inaccuracies or omissions. Telit reserves the right to make changes to any products described herein and reserves the right to revise this document and to make changes from time to time in content hereof with no obligation to notify any person of revisions or changes. Telit does not assume any liability arising out of the application or use of any product, software, or circuit described herein; neither does it convey license under its patent rights or the rights of others.

It is possible that this publication may contain references to, or information about Telit products (machines and programs), programming, or services that are not announced in your country. Such references or information must not be construed to mean that Telit intends to announce such Telit products, programming, or services in your country.

**Copyrights**

This instruction manual and the Telit products described in this instruction manual may be, include or describe copyrighted Telit material, such as computer programs stored in semiconductor memories or other media. Laws in the Italy and other countries preserve for Telit and its licensors certain exclusive rights for copyrighted material, including the exclusive right to copy, reproduce in any form, distribute and make derivative works of the copyrighted material. Accordingly, any copyrighted material of Telit and its licensors contained herein or in the Telit products described in this instruction manual may not be copied, reproduced, distributed, merged or modified in any manner without the express written permission of Telit. Furthermore, the purchase of Telit products shall not be deemed to grant either directly or by implication, estoppel, or otherwise, any license under the copyrights, patents or patent applications of Telit, as arises by operation of law in the sale of a product.

**Computer Software Copyrights**

The Telit and 3rd Party supplied Software (SW) products described in this instruction manual may include copyrighted Telit and other 3rd Party supplied computer programs stored in semiconductor memories or other media. Laws in the Italy and other countries preserve for Telit and other 3rd Party supplied SW certain exclusive rights for copyrighted computer programs, including the exclusive right to copy or reproduce in any form the copyrighted computer program. Accordingly, any copyrighted Telit or other 3rd Party supplied SW computer programs contained in the Telit products described in this instruction manual may not be copied (reverse engineered) or reproduced in any manner without the express written permission of Telit or the 3rd Party SW supplier. Furthermore, the purchase of Telit products shall not be deemed to grant either directly or by implication, estoppel, or otherwise, any license under the copyrights, patents or patent applications of Telit or other 3rd Party supplied SW, except for the normal non-exclusive, royalty free license to use that arises by operation of law in the sale of a product.



## Usage and Disclosure Restrictions

### License Agreements

The software described in this document is the property of Telit and its licensors. It is furnished by express license agreement only and may be used only in accordance with the terms of such an agreement.

### Copyrighted Materials

Software and documentation are copyrighted materials. Making unauthorized copies is prohibited by law. No part of the software or documentation may be reproduced, transmitted, transcribed, stored in a retrieval system, or translated into any language or computer language, in any form or by any means, without prior written permission of Telit

### High Risk Materials

Components, units, or third-party products used in the product described herein are NOT fault-tolerant and are NOT designed, manufactured, or intended for use as on-line control equipment in the following hazardous environments requiring fail-safe controls: the operation of Nuclear Facilities, Aircraft Navigation or Aircraft Communication Systems, Air Traffic Control, Life Support, or Weapons Systems (High Risk Activities"). Telit and its supplier(s) specifically disclaim any expressed or implied warranty of fitness for such High Risk Activities.

### Trademarks

TELIT and the Stylized T Logo are registered in Trademark Office. All other product or service names are the property of their respective owners.

### Third Party Rights

The software may include Third Party Right software. In this case you agree to comply with all terms and conditions imposed on you in respect of such separate software. In addition to Third Party Terms, the disclaimer of warranty and limitation of liability provisions in this License shall apply to the Third Party Right software.

TELIT HEREBY DISCLAIMS ANY AND ALL WARRANTIES EXPRESS OR IMPLIED FROM ANY THIRD PARTIES REGARDING ANY SEPARATE FILES, ANY THIRD PARTY MATERIALS INCLUDED IN THE SOFTWARE, ANY THIRD PARTY MATERIALS FROM WHICH THE SOFTWARE IS DERIVED (COLLECTIVELY "OTHER CODE"), AND THE USE OF ANY OR ALL THE OTHER CODE IN CONNECTION WITH THE SOFTWARE, INCLUDING (WITHOUT LIMITATION) ANY WARRANTIES OF SATISFACTORY QUALITY OR FITNESS FOR A PARTICULAR PURPOSE.

NO THIRD PARTY LICENSORS OF OTHER CODE SHALL HAVE ANY LIABILITY FOR ANY DIRECT, INDIRECT, INCIDENTAL, SPECIAL, EXEMPLARY, OR CONSEQUENTIAL DAMAGES (INCLUDING WITHOUT LIMITATION LOST PROFITS), HOWEVER CAUSED AND WHETHER MADE UNDER CONTRACT, TORT OR OTHER LEGAL THEORY, ARISING IN ANY WAY OUT OF THE USE OR DISTRIBUTION OF THE OTHER CODE OR THE EXERCISE OF ANY RIGHTS GRANTED UNDER EITHER OR BOTH THIS LICENSE AND THE LEGAL TERMS APPLICABLE TO ANY SEPARATE FILES, EVEN IF ADVISED OF THE POSSIBILITY OF SUCH DAMAGES.

Copyright © Telit Communications S.p.A. 2011.



## Contents

<b>1. Introduction.....</b>	<b>6</b>
1.1. Scope.....	6
1.2. Audience .....	6
1.3. Contact Information, Support .....	6
1.4. Document Organization .....	6
1.5. Text Conventions .....	7
1.6. Related Documents.....	7
<b>2. Telit USB Driver Installer.....</b>	<b>8</b>
2.1. Scope of the installer.....	8
2.2. How to use the installer .....	8
2.3. ATOP 3.5G modules .....	10
2.4. Modules with network interface .....	10
2.5. Selective Suspend .....	10
2.5.1. Telit modems listed in group 1 .....	10
2.5.2. Telit modems listed in group 2 .....	11
<b>3. Supported modems by Product IDs.....</b>	<b>12</b>
3.1. List of PIDs.....	12
<b>4. Document History.....</b>	<b>14</b>





# 1. Introduction

## 1.1. Scope

Scope of this document is to give an overview of Telit Windows USB Driver Installer.

## 1.2. Audience

This document is intended for users of Telit modems with Windows operating system.

## 1.3. Contact Information, Support

For general contact, technical support, to report documentation errors and to order manuals, contact Telit Technical Support Center (TTSC) at:

[TS-EMEA@telit.com](mailto:TS-EMEA@telit.com)  
[TS-NORTHAMERICA@telit.com](mailto:TS-NORTHAMERICA@telit.com)  
[TS-LATINAMERICA@telit.com](mailto:TS-LATINAMERICA@telit.com)  
[TS-APAC@telit.com](mailto:TS-APAC@telit.com)

Alternatively, use:

<http://www.telit.com/en/products/technical-support-center/contact.php>

For detailed information about where you can buy the Telit modules or for recommendations on accessories and components visit:

<http://www.telit.com>

To register for product news and announcements or for product questions contact Telit Technical Support Center (TTSC).

Our aim is to make this guide as helpful as possible. Keep us informed of your comments and suggestions for improvements.

Telit appreciates feedback from the users of our information.

## 1.4. Document Organization

This document contains the following chapters:

[Chapter 1: “Introduction”](#) provides a scope for this document, target audience, contact and support information, and text conventions.

[Chapter 2: “Telit USB Driver Installer”](#) gives an overview of the installer.

[Chapter 3: “Supported Modems by Product IDs”](#) shows the products supported by the installer.



[Chapter 4: “Document History”](#).

## 1.5. Text Conventions



***Danger – This information MUST be followed or catastrophic equipment failure or bodily injury may occur.***



***Caution or Warning – Alerts the user to important points about integrating the module, if these points are not followed, the module and end user equipment may fail or malfunction.***



**Tip or Information – Provides advice and suggestions that may be useful when integrating the module.**

All dates are in ISO 8601 format, i.e. YYYY-MM-DD.

## 1.6. Related Documents

- AT Commands User Guide of the modem in use



## 2. Telit USB Driver Installer

### 2.1. Scope of the installer

This installer is targeted to users who need Windows drivers for Telit modems.

The following Windows versions are supported:

- Windows 10, both 32 and 64 bits
- Windows 8.x, both 32 and 64 bits
- Windows 7, both 32 and 64 bits
- Windows Vista, 32 bit



*All old installation of Telit drivers identified by the label U8.00.0x should be removed before using Telit USB Driver installer.*

### 2.2. How to use the installer

According to the platform architecture in use, 32 or 64 bits, choose one of the following files:

- TelitModulesDriver\_x86.msi (32 bits)
- TelitModulesDriver\_x64.msi (64 bits)

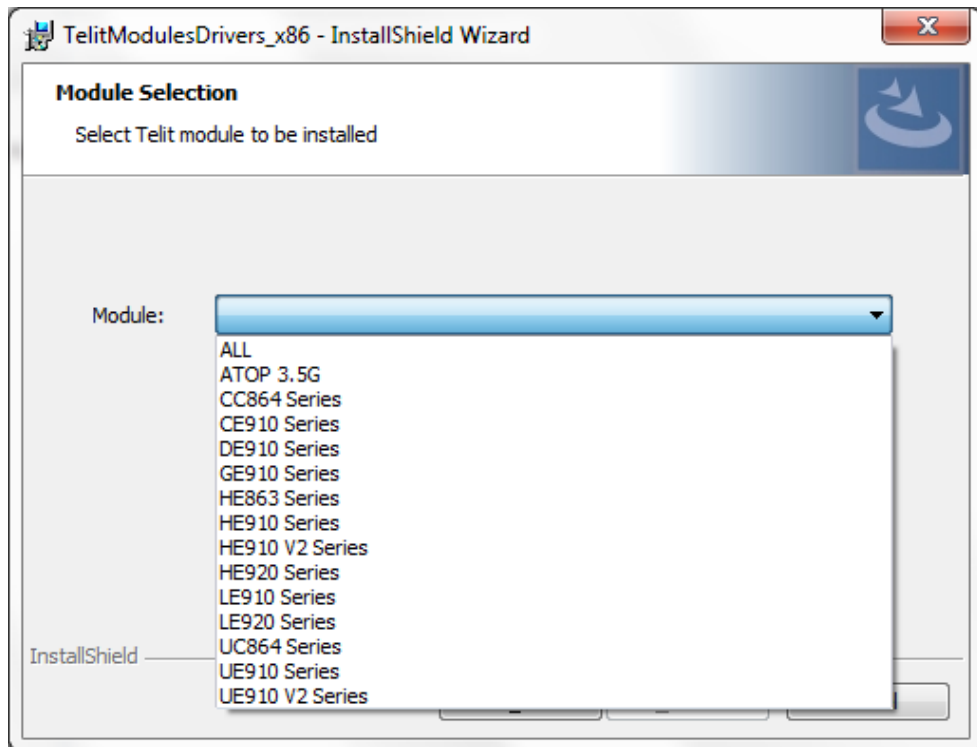


*It is suggested to unplug any Telit modem before starting the installer.*





After the welcome interface, choose the module to be installed using the combo-box:



Click the Next button to proceed.



**If more than one Telit modem family is to be used, it is suggested to choose “All” in the combo-box in order to install all Telit drivers.**

The following installation choices are available:

- Complete: all the drivers for the chosen modem are installed.
- Custom: the user can choose which driver should be installed.



***Unless there is a specific requirement to choose Custom installation choice, Complete installation is suggested.***

Click the Next button to start the installation.



## 2.3. ATOP 3.5G modules

When using an ATOP 3.5G module, two ports in Device Manager will show the yellow bang, since no driver is available for these ports.

## 2.4. Modules with network interface

Some Telit modules present a network interface that can be used for creating a data connection.

It is possible that, when the data connection is up, this network interface generates a conflict with other network interfaces already available in the operating system.

Windows network configuration should be managed in order to have all the network interfaces properly working.

## 2.5. Selective Suspend

Some Telit modules families support Selective Suspend in Windows only with specific USB compositions, identified by the Product ID (PID).

Please consider the following table and paragraphs:

Group	Modems
1	GE/HE/UE910, LE910 V2, UL865
2	CE/DE/LE910, HE/LE920

### 2.5.1. Telit modems listed in group 1

Selective suspend feature is supported for the following PIDs:

- 0x0024
- 0x0025
- 0x0033 (except Windows 8.x and Windows 10)
- 0x0037 (except Windows 8.x and Windows 10)

To enable/disable Selective Suspend identify the current PID and search the following path:

HKEY\_LOCAL\_MACHINE\SYSTEM\CurrentControlSet



for the key `SelectiveSuspendMode`.

The possible values are:

- 0: disable SS
- 3: enable SS



*Please note: if more than one modem has been plugged to the operating system, the registry will have more than one entry. Choose the right one according to the information found in Windows Device Manager for the current modem.*

## 2.5.2. Telit modems listed in group 2

All Telit modems listed in group 2 support Selective Suspend: however with some old firmware releases this feature does not work properly.



*Make sure to use the latest firmware available.*

By default Selective Suspend is disabled on the operating system side.

To enable this feature modify the following registry key:

```
HKEY_LOCAL_MACHINE\SYSTEM\CurrentControlSet\services\telitusbser\QC  
DriverPowerManagementEnabled
```

according to the following values:

- 0 (disable SS)
- 1 (enable SS)



### 3.1. List of PIDs

For details on the composition please refer to the AT Commands User Guide of the modem in use.



***An X in the cell means that the composition is currently not supported.***

Product ID	Vista	7	8.x / 10
0x0020	✓	✓	✓
0x0021	✓	✓	✓
0x0022	✓	✓	✓
0x0023	✓	✓	✓
0x0024	✓	✓	✓
0x0025	✓	✓	✓
0x0032	NCM	Telit MBIM	Inbox MBIM
0x0033	NCM	Telit MBIM	X
0x0035	✓	✓	✓
0x0036	✓	✓	✓
0x0037	✓	✓	✓
0x1000	✓	✓	✓
0x1001	✓	✓	✓
0x1002	✓	✓	✓
0x1003	✓	✓	✓
0x1004	✓	✓	✓
0x1005	✓	✓	✓
0x1006	✓	✓	✓
0x1010	✓	✓	✓
0x1011	✓	✓	✓
0x1012	✓	✓	✓
0x1013	✓	✓	✓
0x1014	✓	✓	✓



## Telit USB Driver Installer User Guide

1VV0301164 Rev.4 – 2016-01-18

<b>0x1015</b>	✓	✓	✓
<b>0x1017</b>	✓	✓	✓
<b>0x1018</b>	✓	✓	✓
<b>0x1019</b>	✓	✓	✓
<b>0x101B</b>	X	X	Inbox MBIM
<b>0x1040</b>	✓	✓	✓
<b>0x1041</b>	X	X	Inbox MBIM
<b>0x1042</b>	X	Inbox RNDIS	Inbox RNDIS
<b>0x1044</b>	X	X	Inbox MBIM
<b>0x1200</b>	✓	✓	✓
<b>0x1201</b>	✓	✓	✓
<b>0x1203</b>	X	Inbox RNDIS	Inbox RNDIS
<b>0x1204</b>	X	X	Inbox MBIM
<b>0x1205</b>	X	X	Inbox MBIM
<b>0x1400</b>	✓	✓	✓
<b>0x2300</b>	✓	✓	✓



## 4. Document History

Revision	Date	Changes
0	2015-01-30	<ul style="list-style-type: none"> <li>First issue: Added support for LE910 V2 Series</li> </ul>
1	2015-04-24	<ul style="list-style-type: none"> <li>Added support for Windows 10</li> </ul>
2	2015-07-28	<ul style="list-style-type: none"> <li>Added new PID for MBIM port, only for Windows 8 and newer OS</li> <li>Added LE866 support and new information about installer procedure</li> <li>Added new info point for modules with network interface</li> </ul>
3	2015-10-02	<ul style="list-style-type: none"> <li>Document rearrangement</li> </ul>
4	2016-01-18	<ul style="list-style-type: none"> <li>Added LE910 V2 Series new PIDs support</li> </ul>

