

Windows Firmware Update Procedure for NL-SW-LTE-QBG95

NimbeLink Corp

Updated: June 2020



© NimbeLink Corp. 2020. All rights reserved.

NimbeLink Corp. provides this documentation in support of its products for the internal use of its current and prospective customers. The publication of this document does not create any other right or license in any party to use any content contained in or referred to in this document and any modification or redistribution of this document is not permitted.

While efforts are made to ensure accuracy, typographical and other errors may exist in this document. NimbeLink reserves the right to modify or discontinue its products and to modify this and any other product documentation at any time.

All NimbeLink products are sold subject to its published Terms and Conditions, subject to any separate terms agreed with its customers. No warranty of any type is extended by publication of this documentation, including, but not limited to, implied warranties of merchantability, fitness for a particular purpose and non-infringement.

Skywire and NimbeLink are registered trademarks of NimbeLink Corp. All other trademarks appearing in the document are the property of their respective owners.

Table of Contents

Introduction	3
Firmware Update Procedure	3
Plug Modem into Development kit	3
Connect USB cable from Kit to PC	3
Apply Power	3
Recognize Modem	4
Run Update Application	4
Load the Firmware	4
Select the COM Port	5
Run the Firmware Update	5
Check New Software Package Version	5
Firmware Update Complete	6

1. Introduction

As cellular carriers and chipset providers update the network and products that support it, new features get added that are desirable to enable in NimbeLink modems. This document provides instructions on how to update the NL-SW-LTE-QBG95 Skywire® modem to new firmware versions using Windows.

2. Firmware Update Procedure

USB drivers and firmware update packages for the QBG95 Skywire are available from NimbeLink's product support team. Please contact them at product.support@nimbelink.com for assistance.

2.1 Plug Modem into Development kit

This guide is written for users using the NL-SWDK development kit. There are additional development kits that can be used for firmware updates, but are not documented here.

2.2 Connect USB cable from Kit to PC

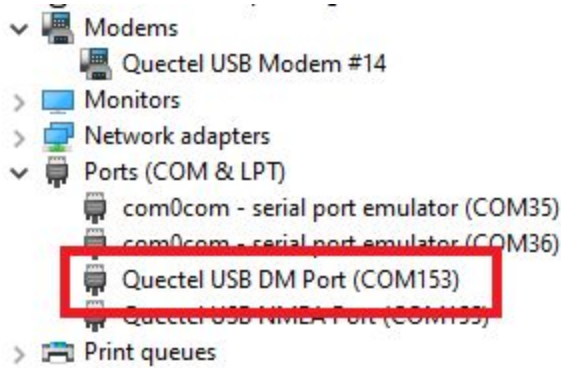
Connect the USB cable to USB connector J5 and the PC.

2.3 Apply Power

Plug power supply into connector/barrel jack J3 and turn on the modem by pressing the ON_BTN for 1 second.

2.4 Recognize Modem

After applying power it can take about 10 seconds before the USB ports are initialized and recognized by the operating system. Note the COM port of the Quectel USB DM Port for later.

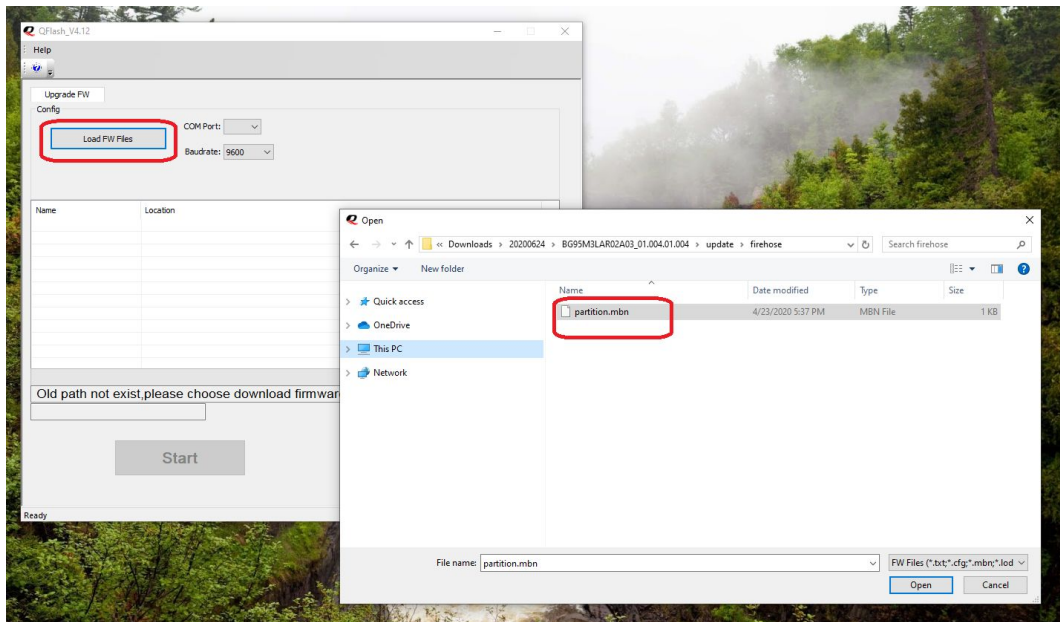


2.5 Run Update Application

Extract the QFlash_V4.12.zip folder and run the QFlash_V4.12.exe file inside of \QFlash_V4.12\Release.

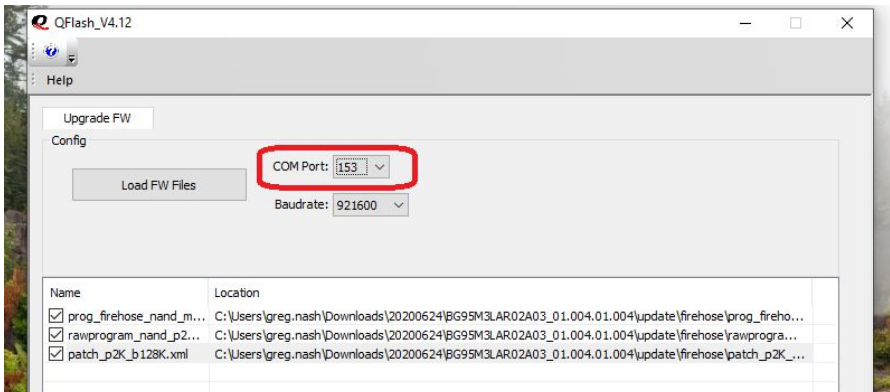
2.6 Load the Firmware

Load the firmware update into the update tool by clicking the 'Load FW Files' button. Select the partition.mbn file inside of the /update/firehose folder.



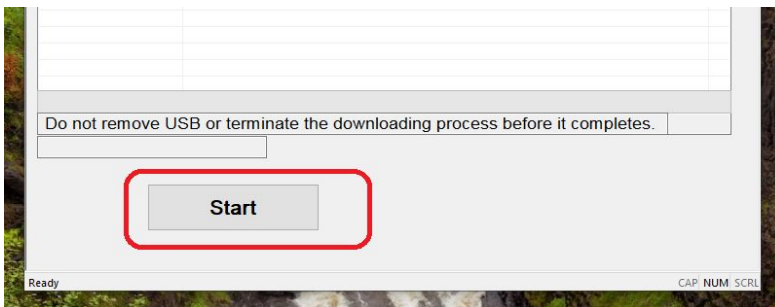
2.7 Select the COM Port

Select the COM Port that the Quectel USB DM Port enumerated under.

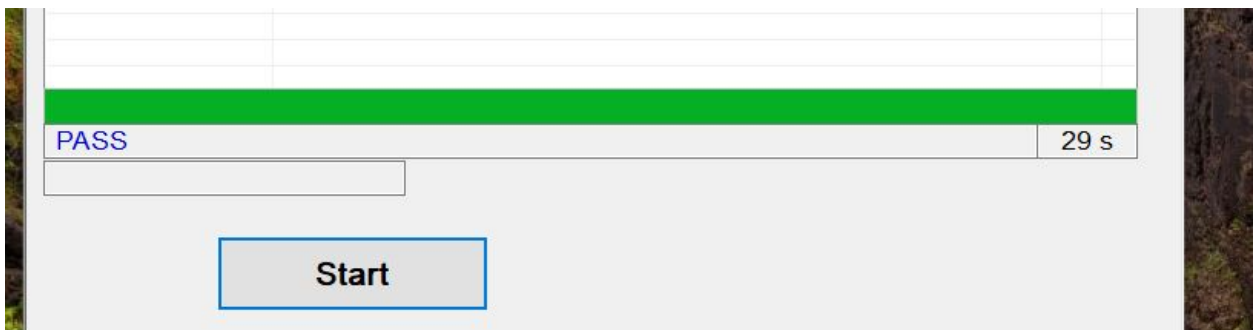


2.8 Run the Firmware Update

Click the start button to begin the firmware update. The firmware update will typically take 1-2 minutes to complete.



When the firmware update is complete and has passed the update tool will display a green bar with PASS underneath it.



2.9 Check New Software Package Version

Confirm that the new firmware version has been loaded to the device. Issue the following command to check the software package version:

Command: AT+QGMR
Response: BG95M3LAR02A03_01.004.01.004

OK

The software package versions will vary depending on the software update package that was used.

2.10 Firmware Update Complete

The firmware update is now complete. Please properly power down the modem using the AT+QPOWD command or continue to use the modem.