

Skywire 4G LTE CAT 4 WW

NimbeLink, a global leader in embedded cellular modem technology and asset tracking solutions, has introduced the Skywire® 4G LTE CAT 4 WW modem. This Skywire modem leverages Category 4 technology. The NL-SW-LTE-TC4WWG is ideal for delivering fast reliable cellular connectivity to products with applications World Wide. The modem supports GNSS, dual SIMs, a single SKU for both AT&T / Verizon networks, integrated TCP/IP stacks, plus is AT&T's FirstNet (Band 14) capable.

Features

- Small Skywire Form-Factor
- 4G LTE Category 4 with 3G fallback*
- U.FL Antenna ports for easy antenna integration
- Band 14 support – FirstNet on AT&T's network
- Dual SIM support with integrated solder down SIM and external 3FF SIM card slot
- GNSS support for GPS, Glonass, Beidou, Galileo, and QZSS
- Multi-Carrier Support on a Single Device

Advantages

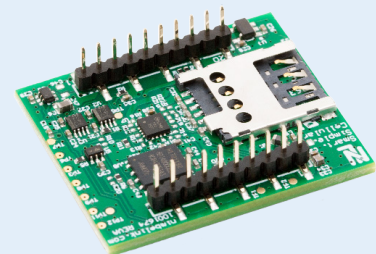
- Longest Network Life
- CAT 4 LTE Speeds (Up to 150 Mbps down/ 50 Mbps up)
- Easily connect to Verizon or AT&T networks.
- Improved reception with RX diversity
- 8 Band LTE support
- Integrated GNSS support



Part Number	Description
NL-SW-LTE-TC4WWG	Skywire LTE CAT 4, World Wide, GNSS

About The Skywire Family

Skywire cellular modems are designed to make cellular integration as fast and as easy as it can be. Exceptionally small, pin-compatible, and end-device certified, Skywire modems enable developers to quickly and reliably connect IoT products to cellular networks around the world. Skywire modems are backed by industry leading documentation and expert-level product support.



Technical Specifications (NL-SW-LTE-TC1WWG)

Target Region	Global
Compatible Carriers	AT&T, Orange, Telstra, Telus, T-Mobile, Verizon, Vodafone, and more
Cellular Technology	
LTE Category	LTE CAT 4
LTE Frequency Bands	FDD B1[2100], B2[1900], B3[1800], B4[1700], B5[850], B7[2600], B8[900], B12[700], B13[700], B14[700], B19[850], B20[800], B26[850], B28[700]
3G Technology Supported*	DC-HSPA+
3G Frequency Band	B1[2100], B2[1900], B3[1800], B5[850], B8[900], B19[850]
2G Technology Supported	GSM, EDGE, GPRS
2G Frequency Band	GSM850, EGSM900, DCS1800, PCS1900
Data Speeds	
Download Rate and Upload Rate	Download: LTE: 150 Mbps HSPA+: 42.0 Mbps Upload: LTE: 50 Mbps HSPA+: 5.76 Mbps
Hardware	
Form Factor	Skywire Interface
Dimensions	29.85mm x 34.4mm x 10.5mm
Weight	8 grams
Internet Protocols	
Network Stack Support	Integrated TCP/IP, UDP/IP, HTTP, FTP, SSL/TLS, SMTP, IPv4/IPv6, NITZ, PING, PPP Stacks
SMS	SMS over IMS
Location	
GNSS	GPS, Glonass, Beidou, Galileo, and QZSS
Power	
Supply Voltage	3.4V - 4.2V (3.8V Nominal)
I/O Voltage	1.65V - 5.5V
Current Consumption	Average N/A Peak N/A Idle N/A Sleep N/A
Interfaces	
Data Interface	UART, USB (USB 2.0 compliant)
USB Driver Support	OS: Windows 7/8/10 Linux Drivers: MBIM PPP RNDIS ECM QMI NMEA AT Console
RF	Primary (U.FL), Rx Diversity and MIMO DL 2x2 (U.FL)
SIM	
Type	Integrated Verizon SIM, external 3FF slot
Approvals	
Regulatory Certifications	FCC (in progress), IC (in progress), PTCRB (in progress)
Carrier Approvals	AT&T, Rogers (In-Progress), Telus (In-Progress), Verizon, and more
Compliance	RoHS compliant
Temperature Range	
Industrial Grade	-40°C to +85°C
Support and Warranty	
	1 Year standard warranty, *3G may not be available in your area

About NimbeLink

NimbeLink is the world's most trusted partner for cellular solutions for the Industrial Internet of Things (IIoT). The Skywire® series of cellular embedded modems, enable dramatic reduction in development and time-to-market. NimbeLink also develops and markets complete, highly configurable edge-to-enterprise Asset-Tracking Solutions.

For more information, visit [NimbeLink.com](https://nimbelink.com)

Content © 2022 NimbeLink Corp. All Right Reserved.