

1

2

3

4

5

6

A

A

Power
POWER.SchDoc



Skywire
Skywire.SchDoc



B

B


C

C

D

D

© NimbeLink Corp. 2016. All rights reserved.

		www.nimbelink.com	
MINNEAPOLIS			
Title: Top			
Project: Renesas Synergy PMOD Adapter	Size: C	Sheet 2 of 4	
Number: 20036	Rev: A	Modified: 3/15/2016	3:42:37 PM
Prepared for: Renesas			CONFIDENTIAL

1

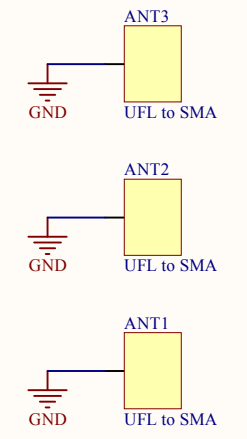
2

3

4

5

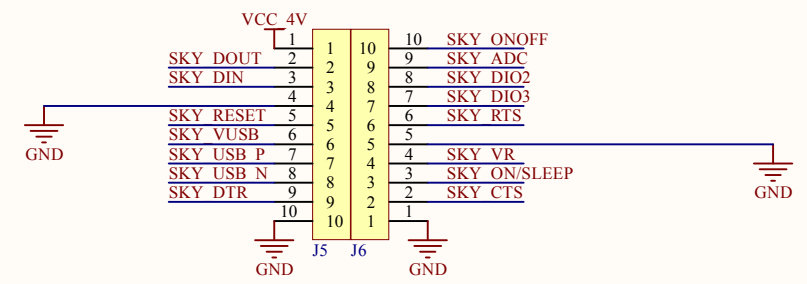
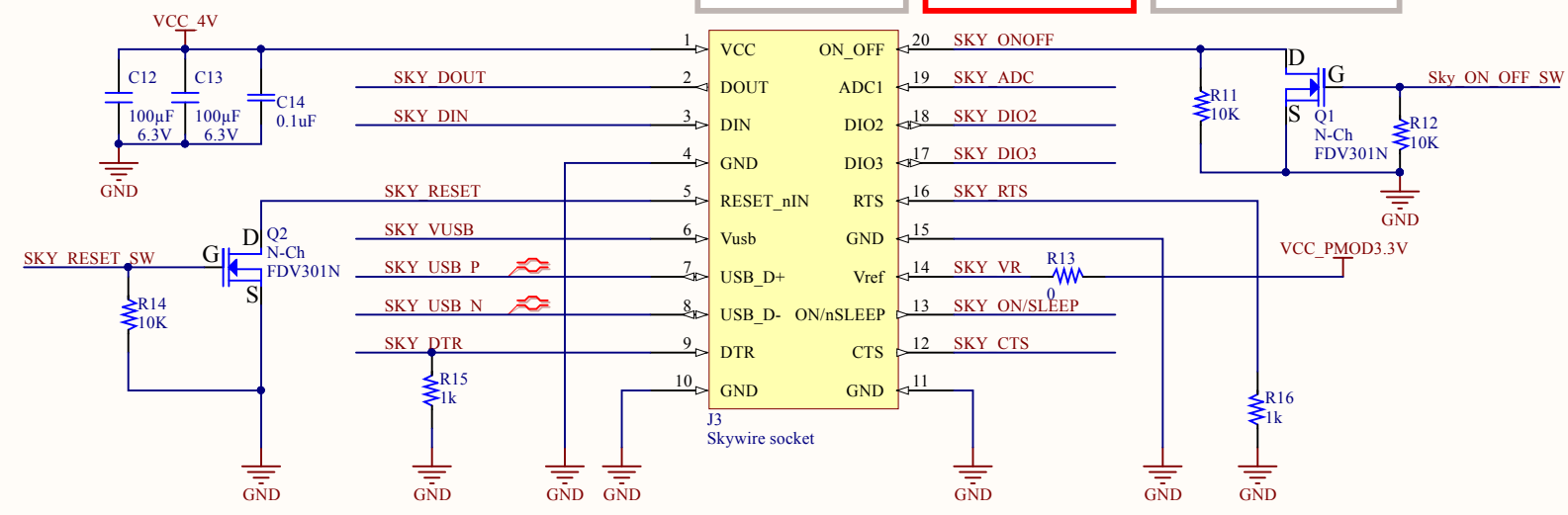
6



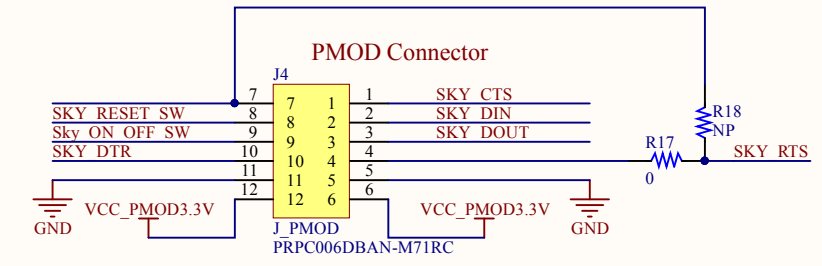
DESIGN NOTE:
Skywire socket is two
2mm pitch 1x10 sockets,
NPPN101BFCN-RC

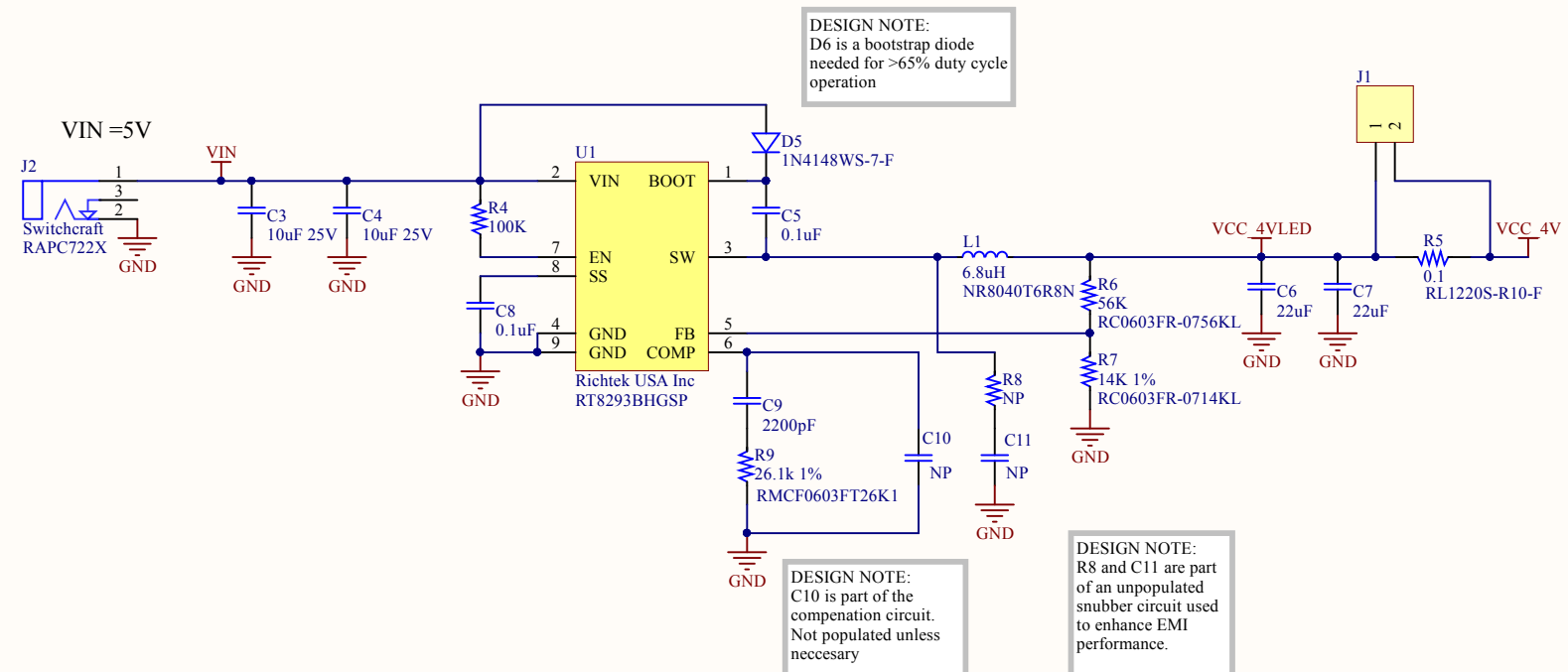
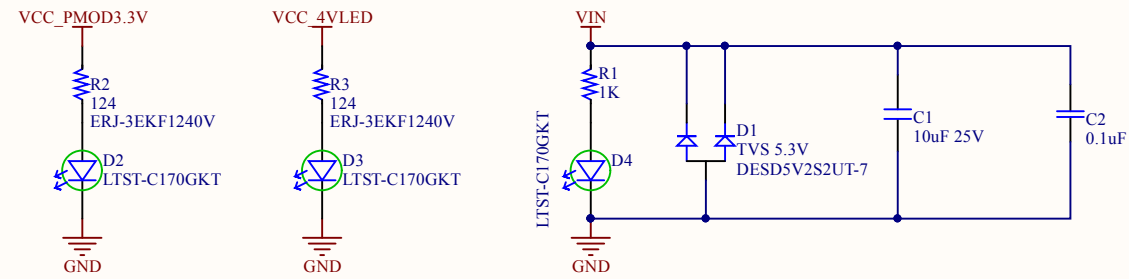
DESIGN NOTE:
SKY_ONOFF is an open
drain assertion and
should NOT have a
pullup.

DESIGN NOTE:
R11 is populated to
automatically turn on the
Skywire. If control of the on_off
line is needed, depop R11 to
use the Sky_ON_OFF_SW.



Skywire Breakout Headers





DESIGN NOTE:
D6 is a bootstrap diode
needed for >65% duty cycle
operation

DESIGN NOTE:
C10 is part of the
compensation circuit.
Not populated unless
necessary

DESIGN NOTE:
R8 and C11 are part
of an unpopulated
snubber circuit used
to enhance EMI
performance.

- Fiducial 1mm
- Fiducial 1mm
- Fiducial 1mm

