

# Skywire 4G LTE-M

NimbeLink, a global leader in embedded cellular modem technology and asset tracking solutions, introduced the Skywire® LTE CAT M1 modem in January 2017, becoming the first modem to be end-device certified on the Verizon 4G LTE Network. This low-power low-cost Skywire® modem features a U.FL port for antenna flexibility and is pin-compatible, enabling future-proof migration to new technologies.

## Features

- No carrier certification required
- Small form-factor
- Skywire interface
- Easy migration path makes them future-proof
- 1 U.FL port provides cellular antenna flexibility
- Requires a UART connection
- Support a wide range of voltages for design flexibility
- Development kits available

## Advantages

- Approvals: FCC and Verizon ODI
- Lower power than 2G, 3G, and 4G LTE CAT 3/4
- Comparable to LoRa and other LPWAN price points

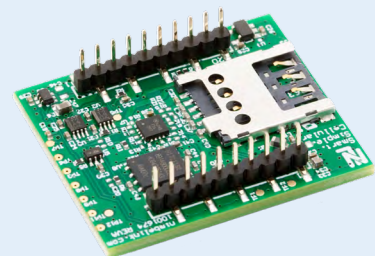


Part Number	Description
-------------	-------------

NL-SW-LTE-SVZM20	Skywire, LTE-M, Verizon
------------------	-------------------------

## About The Skywire Family

Skywire cellular modems are designed to make cellular integration as fast and as easy as it can be. Exceptionally small, pin-compatible, and end-device certified, Skywire modems enable developers to quickly and reliably connect IoT products to cellular networks around the world. Skywire modems are backed by industry leading documentation and expert-level product support.



## Technical Specifications (NL-SW-LTE-SVZM20)

<b>Target Region</b>	
	United States
Compatible Carriers	Verizon
<b>Cellular Technology</b>	
LTE Category	LTE-M
LTE Frequency Bands	LTE B4 [1700], B13 [700]
3G Technology Supported	N/A
3G Frequency Band	N/A
2G Technology Supported	N/A
2G Frequency Band	N/A
<b>Data Speeds</b>	
Download Rate and Upload Rate	Download: LTE-M: 375 Kbps   Upload: LTE-M: 375 Kbps
<b>Hardware</b>	
Form Factor	Skywire Interface
Dimensions	29mm x 33mm x 10.5mm
Weight	8 grams
<b>Internet Protocols</b>	
Network Stack Support	Integrated TCP/IP, UDP/IP, HTTP, FTP, SSL/TLS, IPv4/IPv6, NITZ, MQTT, PPP Stacks
SMS	SMS supported
<b>Location</b>	
GNSS	N/A
<b>Power</b>	
Supply Voltage	3.1V - 4.5V (3.8V nominal)
I/O Voltage	1.65V - 5.5V
Current Consumption	Average 96 mA   Peak 500 mA   Idle 19 mA   Sleep 5.8uA
<b>Interfaces</b>	
Data Interface	UART, USB (USB 2.0 compliant)
USB Driver Support	OS: Windows 7, Windows 8, Windows 10, Linux Drivers: PPP   AT Console
RF	Primary, SISO DL (U.FL)
<b>SIM</b>	
Type	3FF SIM card slot
<b>Approvals</b>	
Regulatory Certifications	FCC
Carrier Approvals	Verizon
Compliance	RoHS compliant
<b>Temperature Range</b>	
Industrial Grade	-40°C to +85°C
<b>Support and Warranty</b>	
	1 Year standard warranty

### About NimbeLink

NimbeLink is the world's most trusted partner for cellular solutions for the Industrial Internet of Things (IIoT). The Skywire® series of cellular embedded modems, enable dramatic reduction in development and time-to-market. NimbeLink also develops and markets complete, highly configurable edge-to-enterprise Asset-Tracking Solutions.

**For more information, visit [NimbeLink.com](http://NimbeLink.com)**

Content © 2019 NimbeLink Corp. All Right Reserved.